

SUPPLEMENTARY MATERIALS

Table 2: List of ICD-9 CM Codes for heart failure

ICD – 9 CM Code	Description
402.01	Malignant hypertensive heart disease with heart failure
402.11	Benign, hypertensive heart disease with heart failure
402.91	Unspecified, hypertensive heart disease with heart failure
404.01	Malignant hypertensive heart and kidney disease with heart failure
404.03	Malignant hypertensive heart and kidney disease with heart failure and chronic kidney disease
404.11	Benign, hypertensive heart and kidney disease with heart failure
404.13	Benign, hypertensive heart and kidney disease with heart failure and chronic kidney disease
404.91	Unspecified, hypertensive heart and kidney disease with heart failure
404.93	Unspecified hypertensive heart and kidney disease with heart failure and chronic kidney disease
428.0	Congestive heart failure, unspecified
428.1	Left heart failure
428.20	Unspecified systolic heart failure
428.21	Acute systolic heart failure
428.22	Chronic systolic heart failure
428.23	Acute on chronic systolic heart failure
428.30	Unspecified diastolic heart failure
428.31	Acute diastolic heart failure
428.32	Chronic diastolic heart failure
428.33	Acute on chronic diastolic heart failure
428.40	Unspecified combined systolic and diastolic heart failure
428.41	Acute combined systolic and diastolic heart failure
428.42	Chronic combined systolic and diastolic heart failure
428.43	Acute on chronic combined systolic and diastolic heart failure
428.9	Heart failure, unspecified

Table 3: Monthly 30 - day All-Cause Readmission rates for the clinic and MHHS cohort

	Clinic Cohort			MHHS Cohort		
Month	All-cause readmissions	Total index Admissions	HF Clinic Readmission Rate	MHHS HF Readmissions	MHHS Index Admissions	MHHS Readmission Rate
Jan-10				43	335	12.84%
Feb-10				46	272	16.91%
Mar-10				62	322	19.25%
Apr-10				47	327	14.37%
May-10				46	305	15.08%
Jun-10				39	255	15.29%
Jul-10				50	239	20.92%
Aug-10				45	250	18.00%
Sep-10	0	3	0.00%	47	225	20.89%
Oct-10	2	3	66.67%	44	250	17.60%
Nov-10	0	5	0.00%	44	246	19.92%
Dec-10	2	7	28.57%	49	307	14.66%
Jan-11	1	7	14.29%	45	320	14.38%
Feb-11	1	4	25.00%	46	306	15.69%
Mar-11	1	6	16.67%	48	325	9.54%
Apr-11	0	4	0.00%	31	235	21.70%
May-11	1	13	7.69%	51	268	13.06%
Jun-11	1	3	33.33%	35	282	13.48%
Jul-11	0	9	0.00%	38	240	16.67%
Aug-11	0	12	0.00%	40	246	12.60%
Sep-11	1	11	9.09%	31	239	15.90%
Oct-11	0	8	0.00%	38	244	22.54%
Nov-11	4	10	40.00%	55	307	20.20%
Dec-11	0	6	0.00%	62	302	13.25%
Jan-12	1	7	14.29%	40	301	14.29%
Feb-12	1	5	20.00%	43	305	19.02%
Mar-12	2	4	50.00%	58	339	11.80%
Apr-12	0	9	0.00%	40	268	17.91%
May-12	0	8	0.00%	48	300	17.67%
Jun-12	1	7	14.29%	53	267	15.36%
Jul-12	1	5	20.00%	41	247	14.98%
Aug-12	0	7	0.00%	37	229	15.28%
Sep-12	0	1	0.00%	35	238	17.23%
Oct-12	0	12	0.00%	41	274	15.69%
Nov-12	3	10	30.00%	43	288	22.22%
Dec-12	2	6	33.33%	64	325	19.69%

Table 4: Descriptive statistics for Clinic and MHHS Cohort

Descriptive statistics	Clinic Cohort	MHHS Cohort
Total all-cause readmissions	26	1625
Total Index admissions	192	10028
Average readmission rate (Sample Mean)	13.54%	16.20%
Sample Standard deviation	17.79%	3.16%
Sample Minimum	0%	9.54%
Sample Maximum`	66.67%	22.54%
25 th percentile (Q1)	0%	14.35%
Median (Q2)	11.69%	15.80%
75 th percentile (Q3)	25.89%	19.18%

Table 5: Causes of 30 -day all-cause readmissions among clinic patients

DRGs	# of redmits	Percentage of redmits
Heart failure	9	34.62%
Respiratory DRGs	2	7.69%
Cardiac defib Implant	2	7.69%
Circulatory disorders	3	11.54%
Atherosclerosis	1	3.85%
Cardiac Arrhythmias	1	3.85%
Chest pain	1	3.85%
GI Hemorrhage	1	3.85%
Esophagitis	1	3.85%
Nutritional	2	7.69%
HIV related conditions	1	3.85%
Diabetes	1	3.85%
Renal failure	1	3.85%

MHTMC hospital cohort

For the MHTMC hospital cohort, data was collected from January 2010 until December 2012. There were a total of 1312 index admissions within this time period, with 231 30-day all-cause heart failure readmissions. Table 5 describes the monthly readmissions rates for the cohort.

Table 6: MHTMC Monthly 30-day all-cause heart failure readmission rate

Month	MHTMC HF Readmissions	MHTMC Index Admissions	TMC Readmission Rate
Jan-10	3	46	6.52%
Feb-10	8	40	20.00%
Mar-10	10	45	22.22%
Apr-10	6	40	15.00%
May-10	5	53	9.43%
Jun-10	5	25	20.00%
Jul-10	7	25	28.00%
Aug-10	6	38	15.79%
Sep-10	7	28	25.00%
Oct-10	8	34	23.53%
Nov-10	6	22	27.27%
Dec-10	6	35	17.14%
Jan-11	7	41	17.07%
Feb-11	4	46	8.70%
Mar-11	7	34	20.59%
Apr-11	5	25	20.00%
May-11	9	35	25.71%
Jun-11	5	36	13.89%
Jul-11	2	29	6.90%
Aug-11	6	36	16.67%
Sep-11	6	26	23.08%
Oct-11	3	27	11.11%
Nov-11	9	40	22.50%
Dec-11	8	48	16.67%
Jan-12	6	31	19.35%
Feb-12	8	35	22.86%
Mar-12	13	47	27.66%
Apr-12	5	42	11.90%
May-12	5	48	10.42%
Jun-12	7	33	21.21%
Jul-12	6	30	20.00%
Aug-12	6	37	16.22%

Sep-12	3	25	12.00%
Oct-12	3	42	7.14%
Nov-12	9	46	19.57%
Dec-12	12	42	28.57%

Table 7: Descriptive statistics for the MHTMC hospital cohort

Total all-cause readmissions	231
Total Index admissions	1312
Average readmission rate (Sample Mean)	17.61%
Sample Standard deviation	6.34%
Sample Minimum	6.9%
Sample Maximum	28.57%
25 th percentile (Q1)	13.41%
Median (Q2)	19.46%
75 th percentile (Q3)	22.91%

Figure 1: Time series representing 30-day heart failure readmission rates for the clinic, MHTMC and MHHS cohorts

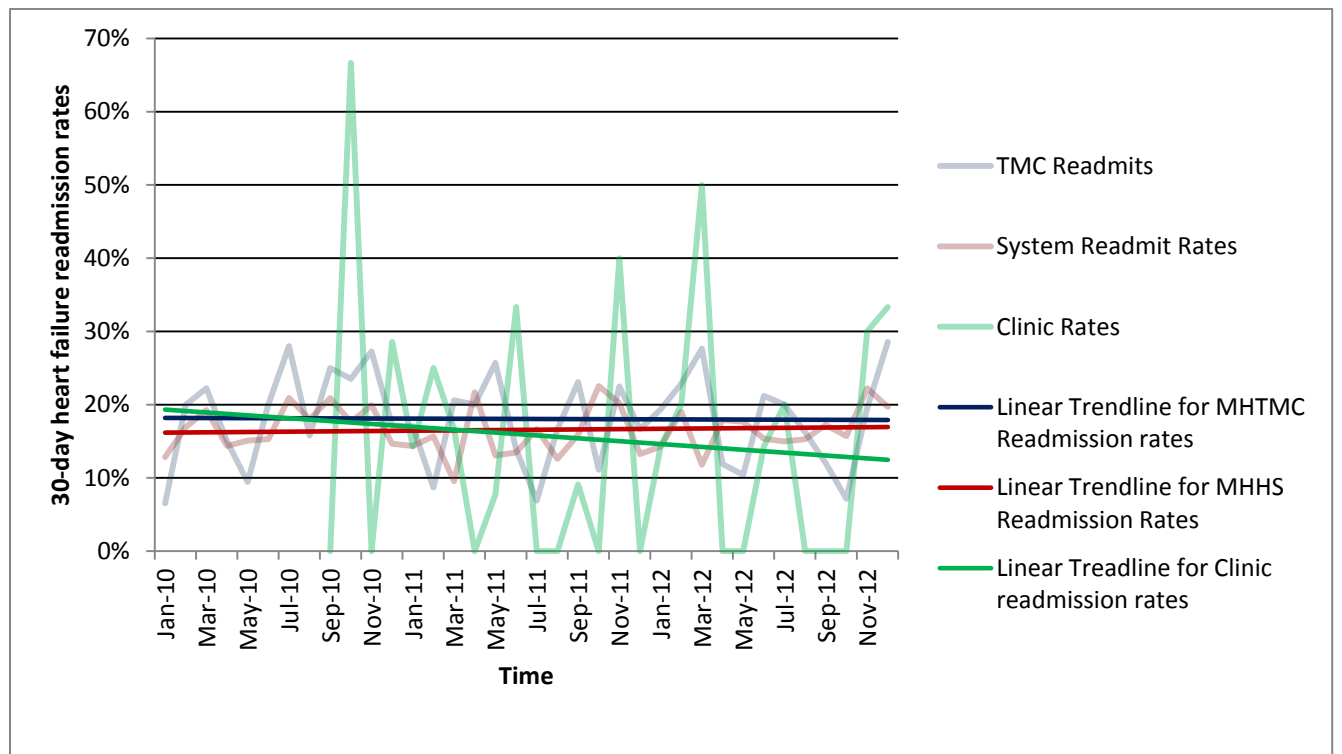


Figure 2: Time Series representing 30-day heart failure readmission rates with the 3 month moving averages for the HF Clinic and MHHS Cohort

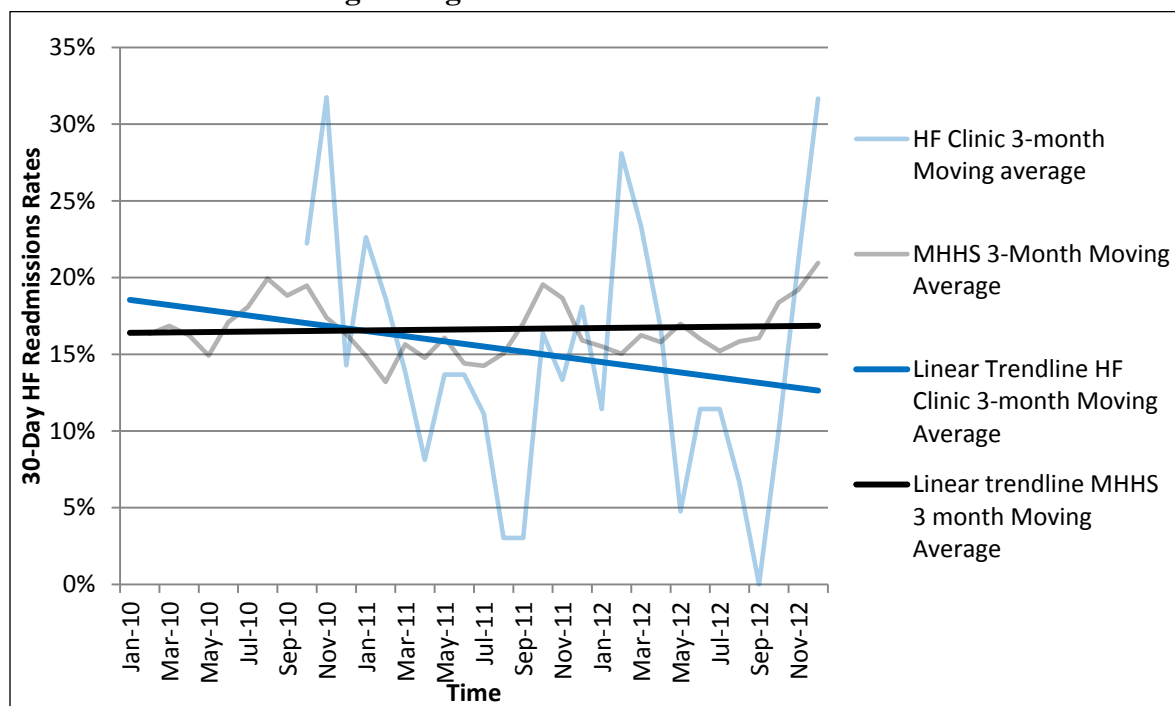


Table 8: Base Clinic Model Assumptions

Base Clinic Model Assumptions	
Patient Volumes	
Patients with heart failure DRGs 491, 492, 493 discharged (FY12 Data)	420
Number of patients monthly with primary diagnosis of heart failure	35
Of these patients, Medicare Discharges	82%
Estimated visits/pt annually	2
Estimated percentage of referrals based on MD survey	100%
Estimated compliance with recommended visit rate	100%
Revenues	
Low and Medium Level Visit (CPT 99211,99212 and 99213)	\$62.80
High Level Visit (CPT 99214)	\$94.89
Estimated ratio of low/medium to high visits	66%
Average revenue	\$63.62
Lab reimbursement for BNP	\$11.63
Current MC 30-Day HF readmission rate	21.6%
Average direct cost per admission	\$4,326
Expected reduction in HF readmission rates (relative)	16.41%
Labor Costs	
Average minutes spent per visit	45
# of visits that can be seen/hr by one RPh	1.333333333
# visits projected per week	16
Number of hours needed per week	12.1
Salary of Pharmacist/hr	\$52.50
Benefits	25%
Other Operating costs	
Clinicstation software licensing	\$0
Cartridges - Heart Failure each/Chem8+	\$23.76
Clinic Set-Up Costs	
Laptop	\$1,431.50
Monitor stand	\$68.50
Docking station	\$56.75
Printer	\$250
Data ports	\$300
Cables for data ports	\$450
iStat monitoring device	\$10,000
Microsoft office license	\$365

Table 9: Cost-Benefit Analysis of MHMC Clinic Model (Base Model)

MHMC HF Clinic January 2013	Projected FY2014	Projected FY2015
Estimated Patient Visits	840	840
REVENUE PROJECTIONS		
Medicare Reimbursement		
Facility fees	\$53,439	\$53,439
Laboratory fees	\$9,769	\$9,769
Revenue from reimbursements	\$63,209	\$63,209
HF 30-day Readmissions cost savings		
30-day HF Readmissions Cost Savings	\$64,402	\$64,402
Total Revenue	\$127,611	\$127,611
COST PROJECTIONS		
Clinic Annual Operating Costs		
Total Salary (0.3 FTE)	\$41,344	\$41,344
ClinicStation licensing	\$0	\$0
Cartridges - Heart Failure	\$19,958	\$19,958
Additional Supplies	\$1,000	\$1,000
Total Operating Costs	\$62,302	\$62,302
Clinic Set-Up Costs		
Computer - laptop	\$1,557	\$0
Printer	\$250	\$0
Data ports	\$1,050	\$0
iStat	\$10,000	\$0
Microsoft office	\$365	\$0
Total Set-Up Costs	\$13,222	\$0
Total Costs	\$75,524	\$62,302
INVESTMENT RETURN		
Total Clinic Revenue	\$127,611	\$127,611
Total Expenses	\$75,524	\$62,302
Benefit	\$52,088	\$65,310
Revenue/Expense Ratio	1.7	2.0

Table 10: Clinic Model Scenarios

	MHMC Base case	Scenario 1 (Volume variance)	Scenario 2 (Readmission variance)	Scenario 3 (FTE variance)	Scenario 4 (Av. Time spent variance)
Number of annual patient visits	840	420	840	2774	840
Number of FTE	0.3	0.15	0.3	1.0	0.2
Relative decrease in 30-day readmissions	16.41%	16.41%	8.20%	16.41%	16.41%
Average time per visit	45	45	45	45	30
Revenue Impact (First Year)	MHMC Base case	Scenario 1 (Volume variance)	Scenario 2 (Readmission variance)	Scenario 3 (FTE variance)	Scenario 4 (Av. Time Spent variance)
Revenue from reimbursements	\$63,209	\$31,604	\$63,209	\$208,744	\$63,209
30-day HF Readmissions Cost Savings	\$64,402	\$32,201	\$32,181	\$212,679	\$64,402
Total Annual Operating Costs	\$62,302	\$31,651	\$62,302	\$203,443	\$48,521
Total Set-Up Costs	\$13,222	\$13,222	\$13,222	\$13,222	\$13,222
Return on Investment	\$52,088	\$18,933	\$19,868	\$204,758	\$65,869
Revenue/Expense Ratio	1.7	1.4	1.3	2.0	2.0

<i>Break-even Analysis</i>		<i>180 annual visits</i>	<i>3.3% relative</i>		
-----------------------------------	--	--------------------------	----------------------	--	--

Table 11: Post-Hoc Power Analysis

Alpha error	0.0500 (two-sided)
Beta error	0.9000
MHHS cohort mean1	16.2
HF Clinic mean2	13.54
MHHS Standard deviation sd1	3.16
HF Clinic standard deviation sd2	17.79
n2/n1	1.00
Estimated required sample sizes: n1 = 485 n2 = 485	

