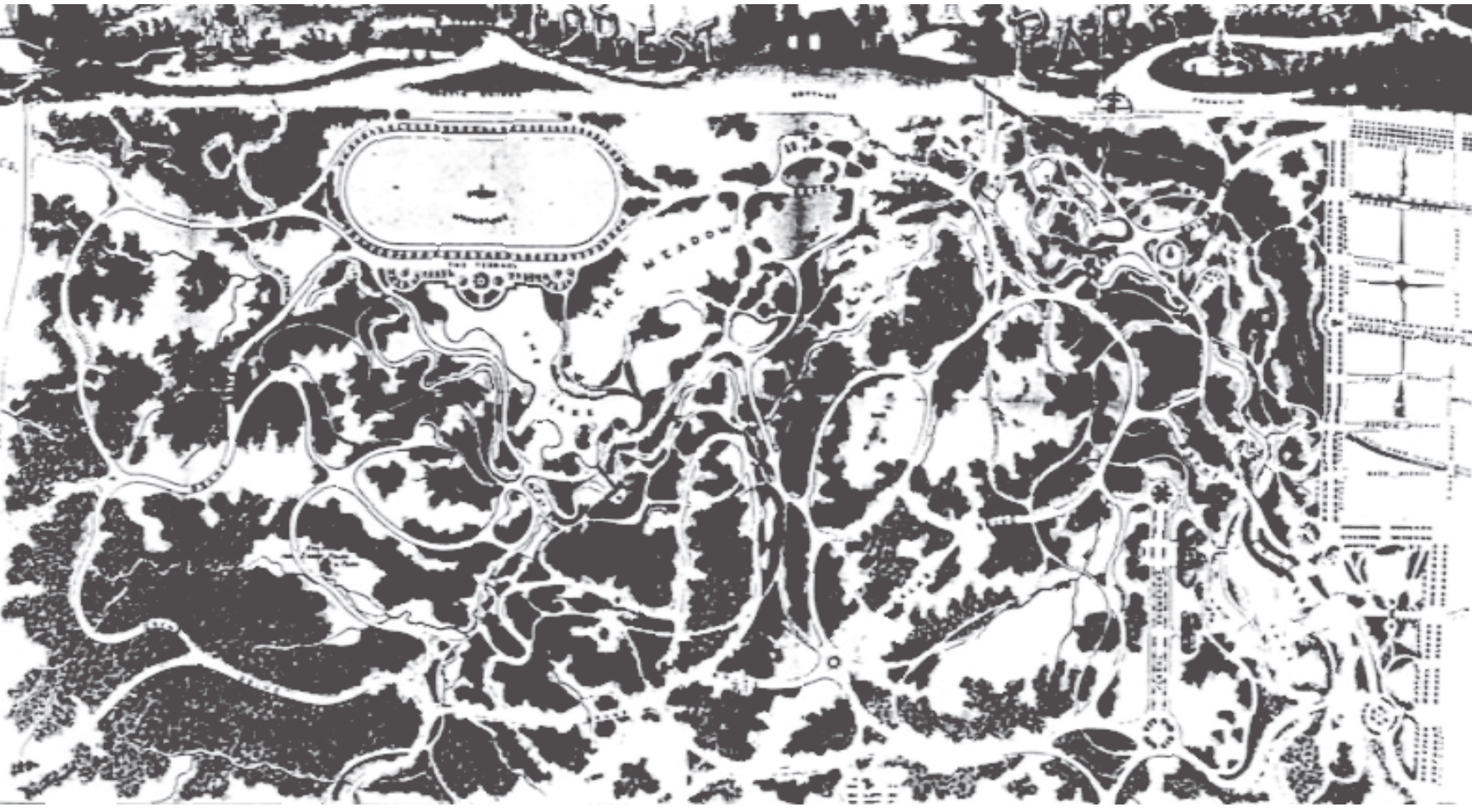
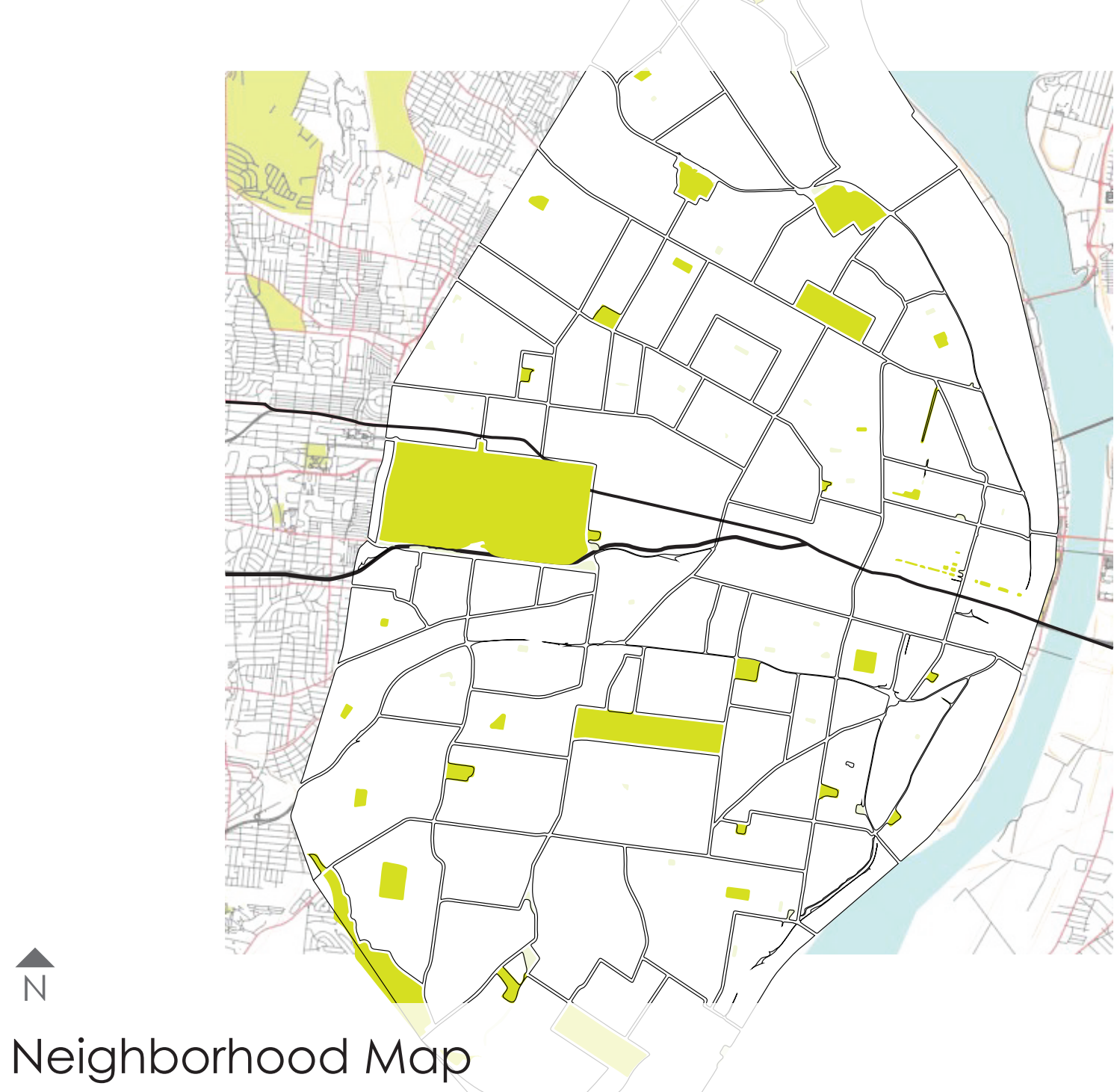
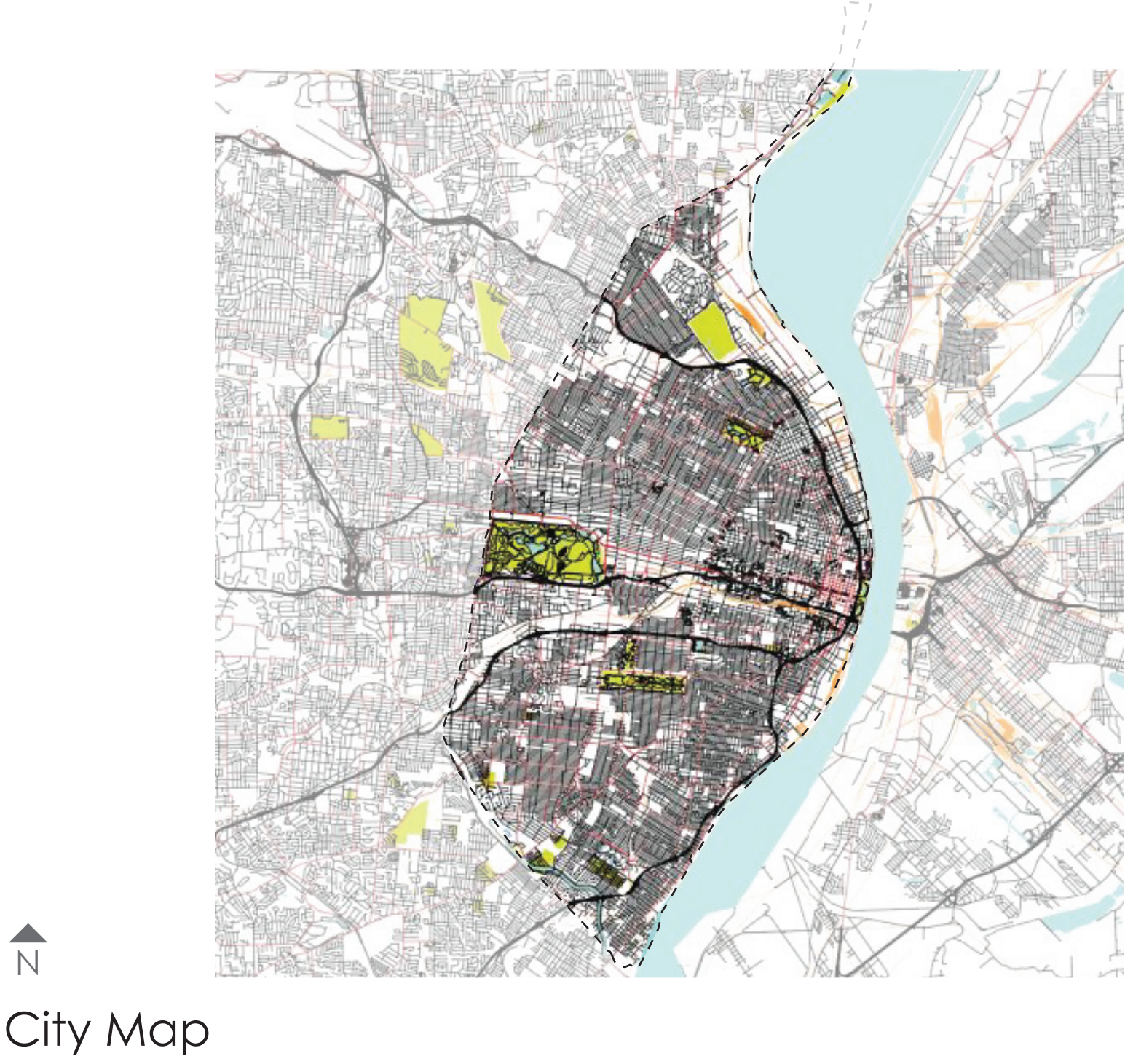
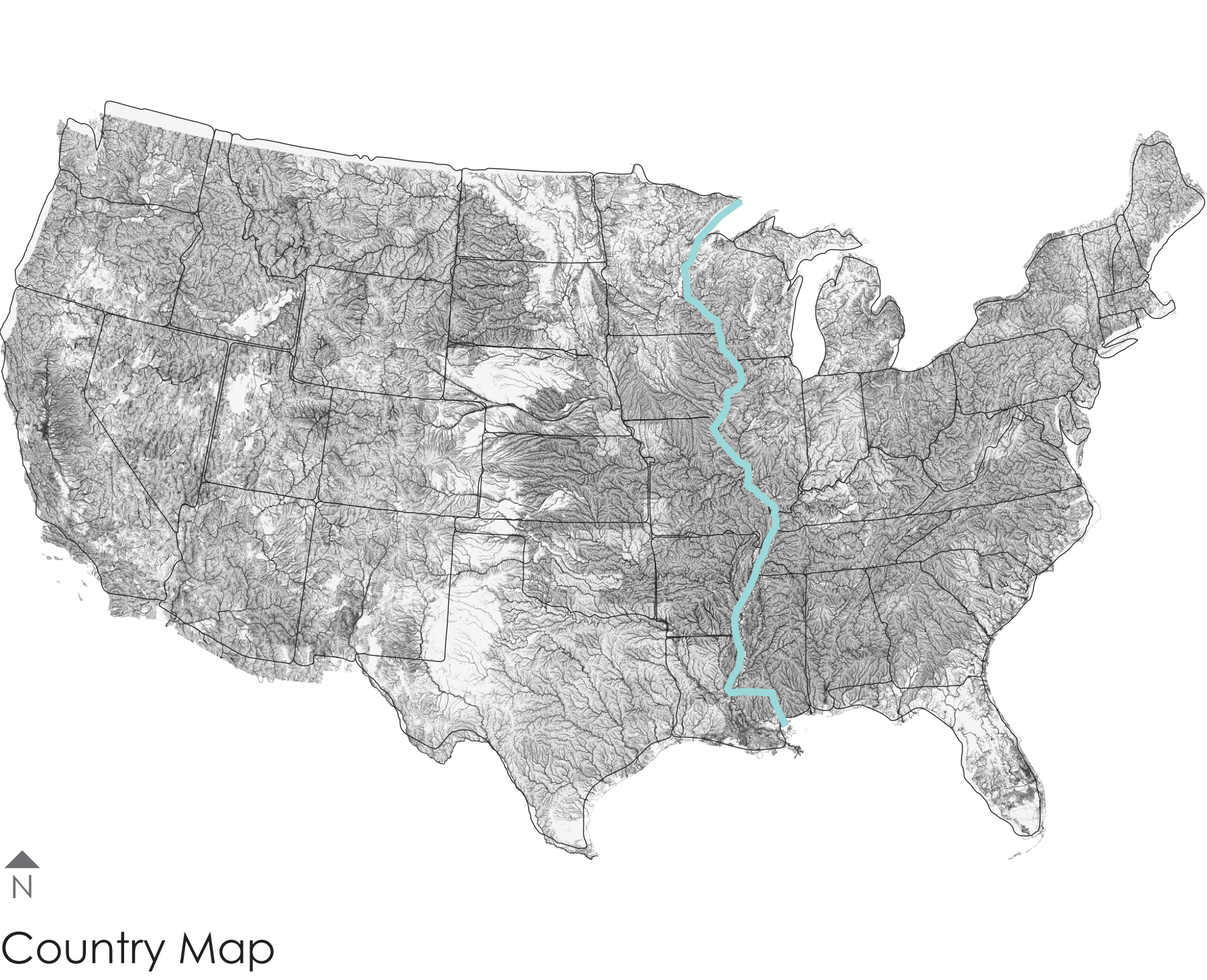


Forest Park

St. Louis, Missouri

PROBLEM 2 PARKS + PARKWAYS
Cristina Trejo | Ariana Cuvelier



Historic Map

Park Data

Total Acreage: 1,300

Facilities List:

A: Arts/Cultural
B: Family/Educational
C: Active Recreational/Sports
D: Passive Recreational

- B1 St. Louis Zoo
- B2 St. Louis Science Center
- B3 Dennis & Judith Jones Visitor & Education Center
- A1 St. Louis Art Museum
- B4 Missouri History Museum
- A2 The MUNY
- D1 Boathouse
- C1 Forest Park Golf-Probstein
- D2 Steinberg Skating Rink
- C2 Highlands Golf / Tennis
- C3 Dwight Davis Tennis Center
- B5 James S. McDonnell Planetarium
- C4 Recreation Division
- D5 Forest Park Hatchery
- C5 Forest Park Central Fields
- C6 Forest Park Cricket Fields
- C7 Missouri Rugby Football Union Home Field
- B6 Aviation Field
- C8 Softball Fields
- C9 Archery Fields
- D6 Picnic Island
- D7 The Jewel Box
- A3 Art Hill
- D8 World Fair Pavilion
- D9 St. Louis Mounted Police Horse Stable

Conservation: 170 acres

Park Finance: (2017)

Owned and operated by the City of St. Louis
Annual Budget for Parks and Recreation:
Govt. Activity Expenses: \$31.7M

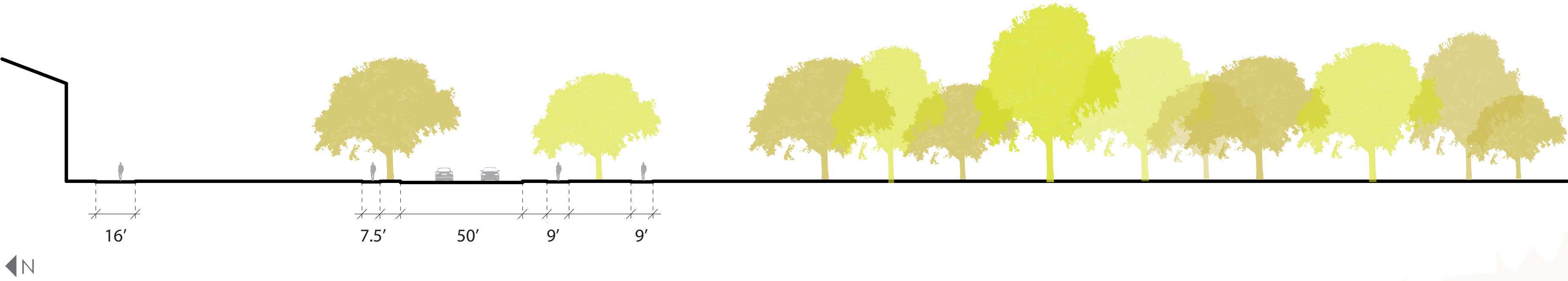
Visitors: 13 Million
Population of St. Louis City: 311,404

Sources: Forest Park Great Streets Study 2018, Comprehensive Annual Financial Report City of St. Louis, Missouri 2017, Forest Park Forever 2017, A Plan for the Central River Front Saint Louis 1928



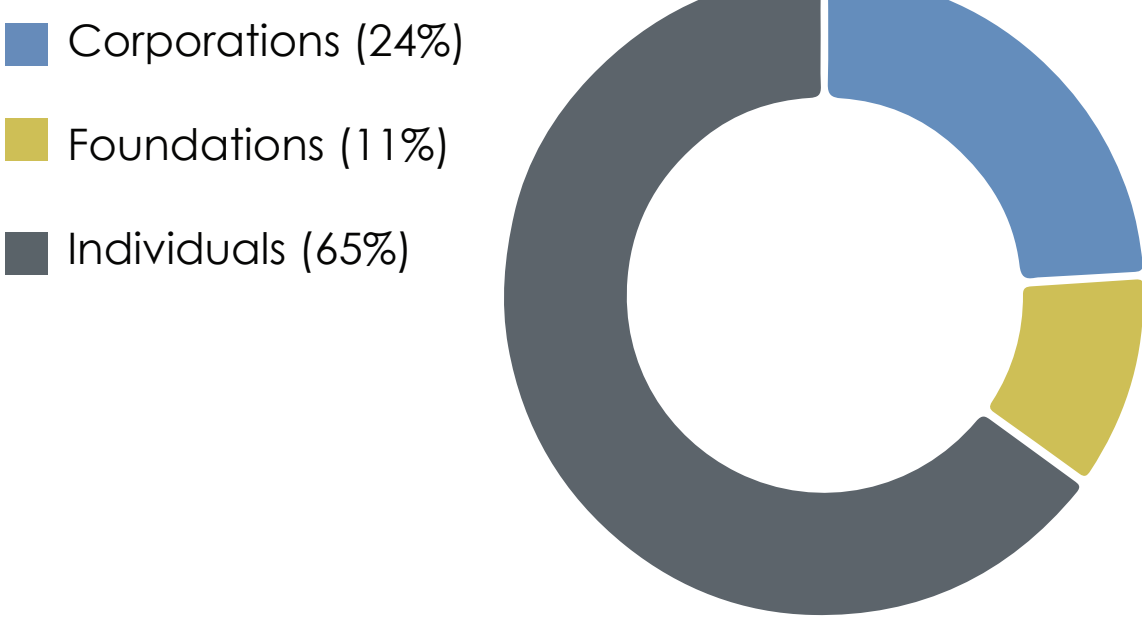
Community

Freedom

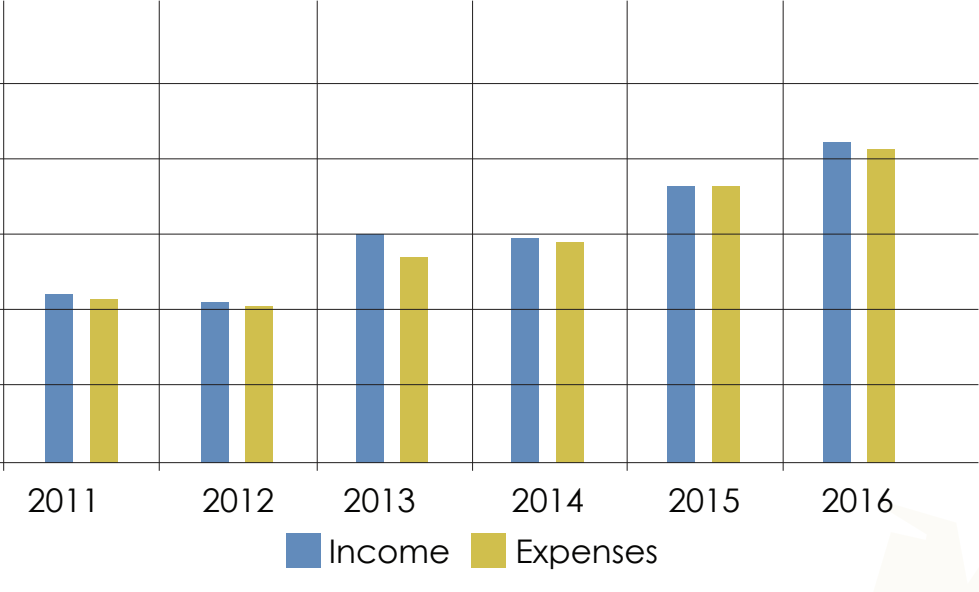


Street Section 1/32" = 1'

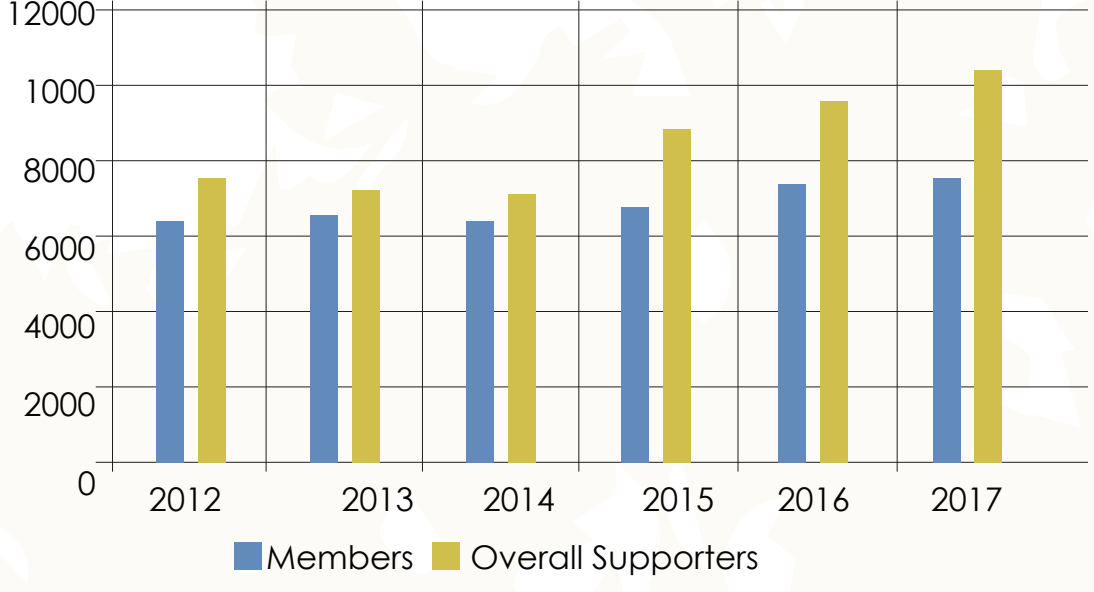
Sources of Income for 2017 Fundraising



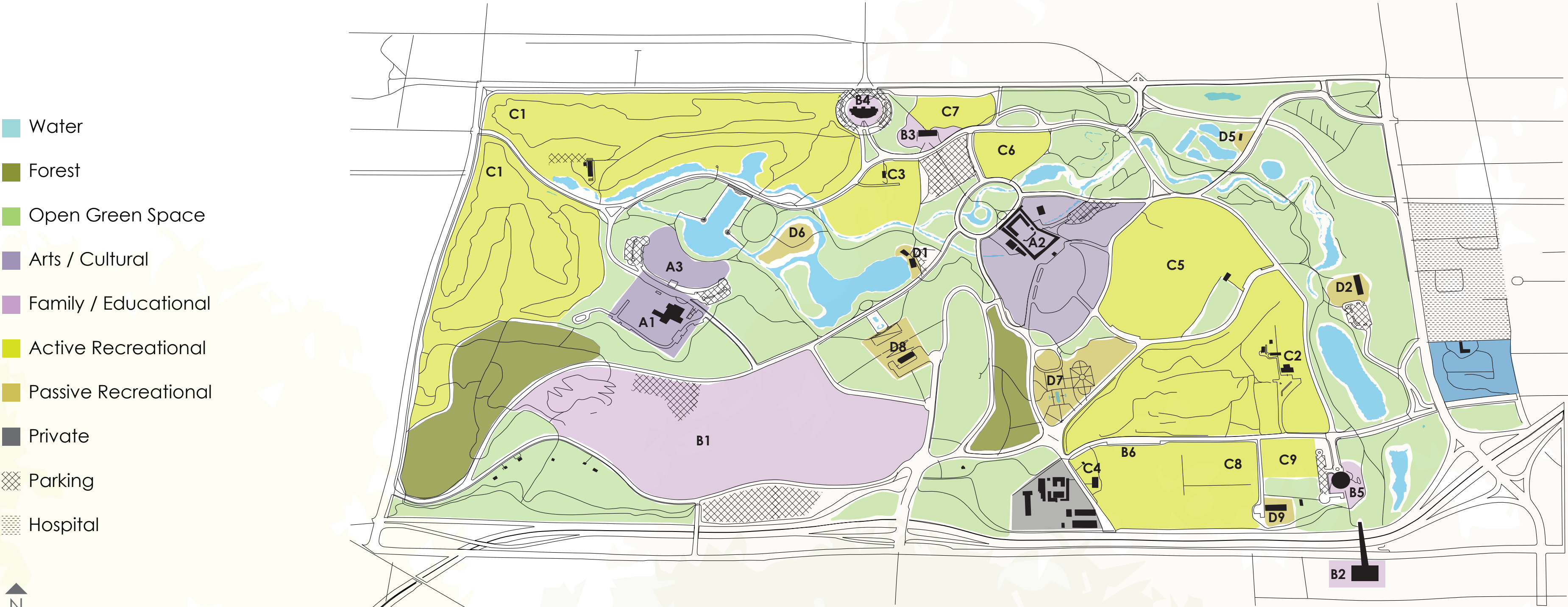
Unrestricted Operating Income & Expenses



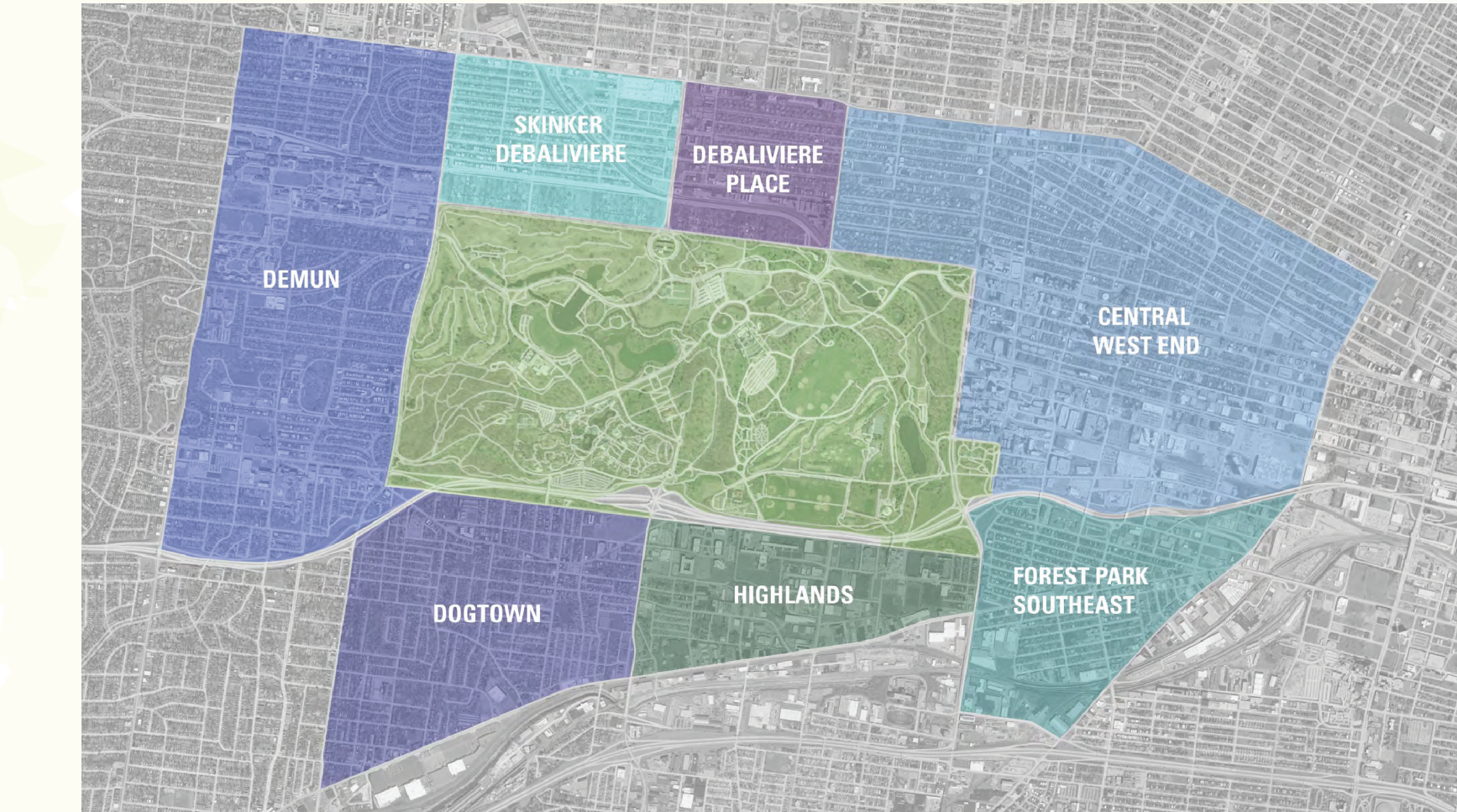
Growth in Membership & Overall Supporters



Park Financing



Park Attractions



Neighborhoods

	Population 2016	Population Change 2010 - 2016	Median Household Income	Median Housing Value
Central West End	14,800	2.0%	\$40,700	\$342,000
Forest Park Southeast	3,100	7.4%	\$31,300	\$134,000
Highlands	1,100	31.8%	\$44,400	\$147,000
Dogtown	6,000	-0.2%	\$48,200	\$144,200
Demun	11,800	0.1%	\$59,000	\$467,500
Skinner Debaliviere	3,800	-0.9%	\$41,600	\$248,000
Debaliviere Place	3,600	5.0%	\$49,800	\$189,800



Metro Access



Volunteering

Every Day