

## **Bridge2Hyku: Developing Migration Strategies and Tools**

Anne Washington(1), Dean Seeman(2), Todd Crocken(1), Santi Thompson(1), Sean Watkins(1), Andrew Weidner(1), Annie Wu(1)

1: *University of Houston Libraries, United States of America*; 2: *University of Victoria Libraries, Canada*

Slide 1



Hello, today Dean and I will be talking about the Bridge2Hyku (abbreviated as B2H) Institute of Museum and Library Services (IMLS) grant. We'll discuss the goals of the project, our timeline, the progress so far, and how you can contribute.



**BASICS**

- 2 Year IMLS grant project (lg-70-17-0217-17)
- Based at University of Houston with partner institutions: University of Victoria, University of Miami, IUPUI, and Texas Digital Library
- Advisors/Stakeholders: Stanford, Indiana, DPLA, Duraspace.

BRIDGE2HYKU  [Bridge2hyku.github.io](https://bridge2hyku.github.io)  
[@bridge2hyku](https://twitter.com/bridge2hyku)

- The overall project aim is to produce a community resource for migrations that includes both information and tooling - more on that in a minute.
- This is a 2-year grant project led by University of Houston with many partners and stakeholders, including:
  - University of Victoria in British Columbia, Canada; University of Miami; IUPUI: Indiana University - Purdue University Indianapolis; and TDL - the Texas Digital Library.
  - Advisors and stakeholders include Stanford University, Indiana University, DPLA: Digital Public Library of America, and Duraspace
- We all work together on strategy and development sprints

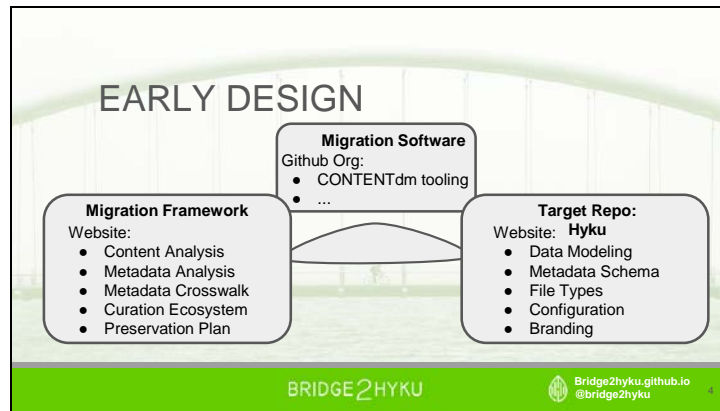
**GOALS**

- Migration strategies and best practices
- B2H website
- Migration software
  - Export
  - Import
- Community support and sustainability

BRIDGE2HYKU

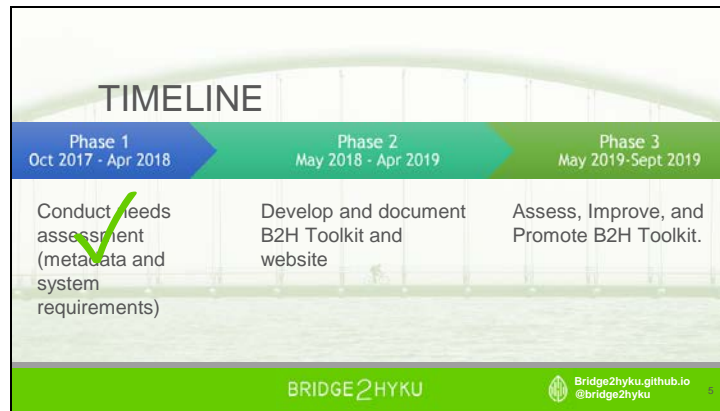
Bridge2hyku.github.io  
@bridge2hyku

- The goal of the project is to create a community resource that will assist institutions considering a migration from their current digital content delivery system - with a focus on CONTENTdm to the Hyku or Hyrax platform. The B2H Toolkit will include general information about digital collection migration planning, specific information about modeling data for and migrating to Hyku, and software tooling for analyzing and extracting data from existing repository platforms.
- One component of this resource, or “toolkit”, is a website. The website will provide general information about migration strategies and best practices and links to the software we are developing. We’re bringing together resources that may already be available as well as creating new content. This content covers migration work both generally and then also with specific focus on CONTENTdm and Hyku
- The other component of this toolkit is software applications to facilitate the export of data from CONTENTdm and import into Hyku. Dean will discuss these a little more in a bit
- Our goal is to provide information and tools that assist people with varying roles and technical skills, consider, plan, and complete a system migration.
- We’re also committed to developing community support for these resources and tools and are thinking about sustainability



- Here's one way we visualize the products of this grant which looks like a bridge :)
- On the left side of the screen you'll see that the website provides some foundational information - information about establishing a migration framework. The pre-migration side of the bridge.
- In the middle we have tooling that facilitates migration and moves you to...
- The other side of the bridge - the ingest of material into a new system.

Slide 5



- 1st phase began late last year, was completed earlier this year - some foundational work, which Dean will detail next
- Moved into phase 2 this past spring - Develop and document B2H Toolkit and website
- Next phase this coming spring - Assess, Improve, and Promote B2H Toolkit.

Slide 6

**PHASE ONE DONE**

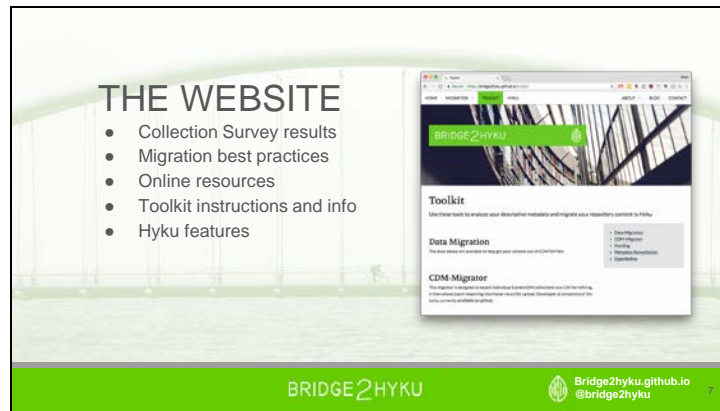
- Requirements and Limits of Hyku
- Digital Collections Survey
- Website

**Digital Collections Survey Report**  
As part of Phase 1, The Bridge2Hyku team completed a survey of all partner institutions.

**BRIDGE2HYKU** [Bridge2hyku.github.io](https://github.com/Bridge2Hyku)  
@bridge2hyku

- As Anne mentioned Phase one is now complete. It included some data collection around the requirements and limitations of Hyku.
- The project also surveyed its partners to collect data related to their digital collections - information about metadata schema, production workflows, stakeholder considerations, and work/file types. The results of this survey are available on the website
- We have also hired content strategist Todd Crocken and he has built the Bridge 2 Hyku project web site.

Slide 7



- And on that point, our hope is that the Bridge 2 Hyku Website can be a storehouse of information for anyone making the move from CONTENTdm to Hyku or, really, for anyone migrating from one digital asset management system to another.
- Aside from the digital collections survey results already mentioned, the site houses information on migration best practices,
- It includes online resources such as blog posts about specific issues related to migration, links to other useful sites, and offers a framework for migration
- The site gives instructions and information around the migration Toolkit
- And it gives general information about Hyku itself

**PHASE TWO PROGRESS**

- Generating Use Cases for toolkit MVP
  - Successful 6 week working group steered by Anne Washington
- Evaluating existing migration tools
  - Sprint troubleshooting University of Victoria's `cdm_migrator` gem
  - Hosted pilot with Texas Digital Library
- Blogposts and build-out of migration content on website
  - [bridge2hyku.github.io/blog](https://bridge2hyku.github.io/blog)

**BRIDGE2HYKU**  [Bridge2hyku.github.io](https://bridge2hyku.github.io)  
[@bridge2hyku](https://twitter.com/bridge2hyku)

- Phase two is also now well under way : Anne led a 6 week working group to develop use cases for an MVP (minimum viable product) of migration tools and information related to migration
- Phase two also offers the opportunity to take stock of the tools each of the partner institutions have developed to support migration and the project is initiating a hosted pilot with Texas Digital Library
- It also gives various contributors a chance to blog about their experiences going through the migration process



**TOOLS IN DEVELOPMENT**

- CDM-Migrator within hyku-vagrant stack
  - CDM-Migrator built by University of Victoria, has been modified for Hyrax 2.0 compliance
  - Hyku-vagrant stack created by Sean Watkins at UH
  - Technical users will be able to bring this up on a vagrant box and do a full test migration on it.
- Vaultify in early development
  - Reconciles textual values to FAST and AAT URIs; dates to EDTF

The slide also features a screenshot of a web-based configuration tool. The tool has a table with columns for field names and configuration options. The visible rows are:

Field	Choose one
Title	Apply to both compound objects and children... Apply only to compound objects...
Library has	Choose one Apply to both compound objects and children... Apply only to compound objects...
Description	Choose one Apply to both compound objects and children... Apply only to compound objects...
Image	Choose one Apply to both compound objects and children... Apply only to compound objects...
Subject	Choose one Apply to both compound objects and children... Apply only to compound objects...

BRIDGE2HYKU [Bridge2hyku.github.io](https://github.com/Bridge2Hyku)  
@bridge2hyku

- There are a few tools being developed : CDM Migrator was first developed by Braydon Justice at the University of Victoria. It allows you to map CONTENTdm fields to Hyku fields

The point of this tool was also to create something simple to use so that this process of mapping (collection by collection) elements from one system to another could be more distributed – something that didn't HAVE to go through our developer every time

- The code for this tool was given to the team and enhancements were added by our partners at the University of Houston.

- This tool in will continue to be refined

- And a quick mention of something called Vaultify we developed at University of Victoria that is in early development and we hope to make a gem, that reconciles textual values to URIs and converts dates to EDTF.

TOOLS IN DEVELOPMENT (cont.)

- CDM Bridge
  - Desktop Electron-app
  - Easily crosswalk CDM metadata to Hyku map
  - Export csv and files for various uses

BRIDGE2HYKU

 Bridge2hyku.github.io  
@bridge2hyku

- University of Houston has created a few different tools that project members have worked on collaboratively
- CDM Bridge is a desktop application that allows you to pull objects and metadata out of CONTENTdm. It maps fields and allows you to export metadata and/or digital files with your new Hyku mapping

Slide 11



And this is what CDM Bridge actually looks like : a very intuitive interface to use as a basis for migration

**TOOLS IN DEVELOPMENT (cont.)**

- HyBridge
  - Ingest Gem for Hyku/Hyrax Stack
- Hunting
  - Facilitates export and transformation of legacy descriptive metadata for normalization and migration

BRIDGE2HYKU  [Bridge2hyku.github.io](https://github.com/Bridge2hyku)  
[@bridge2hyku](https://twitter.com/bridge2hyku)

- Hybridge is a ruby gem that will create a tab within a Hyku instance and it will allow you to see collections you downloaded from CDM Bridge or something else and ingest them
- There's also Hunting which is another Ruby Gem that gathers high level information about CONTENTdm collections and allows you to inspect descriptive metadata for items in a collection
- Again, the emphasis on these tools is to create something intuitive with a low technical barrier for use. All of these projects are available on the Project's Github repository and through the project Website



**CONTRIBUTE**

- Join CONTENTdm Migration IG on samvera slack: #hydra-migrations
- Have a migration story for a blogpost or want to help with development/documentation?  
Contact Todd Crocken ([tcrocken@uh.edu](mailto:tcrocken@uh.edu)) or Andy Weidner ([ajweidner@uh.edu](mailto:ajweidner@uh.edu))
- Follow us on Twitter! @BRIDGE2Hyku
- Check out our website: <https://bridge2hyku.github.io/>
- Check out our github: <https://github.com/Bridge2Hyku>

BRIDGE2HYKU  [Bridge2hyku.github.io](https://bridge2hyku.github.io)  
[@bridge2hyku](https://github.com/bridge2hyku)

And finally if you'd like to contribute to this project, please feel free to contact Todd Crocken or Andy Weidner. You could also join the CONTENTdm Migration interest group

And please follow us on Twitter (@Bridge2Hyku) or check out our project website (<https://bridge2hyku.github.io>) or github repository (<https://github.com/Bridge2Hyku>)

Slide 14



Thanks very much.

Are there any questions?